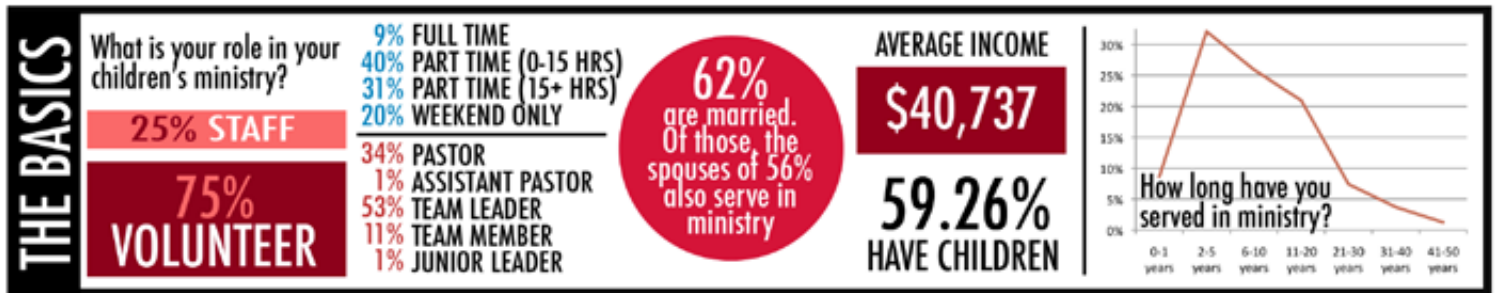
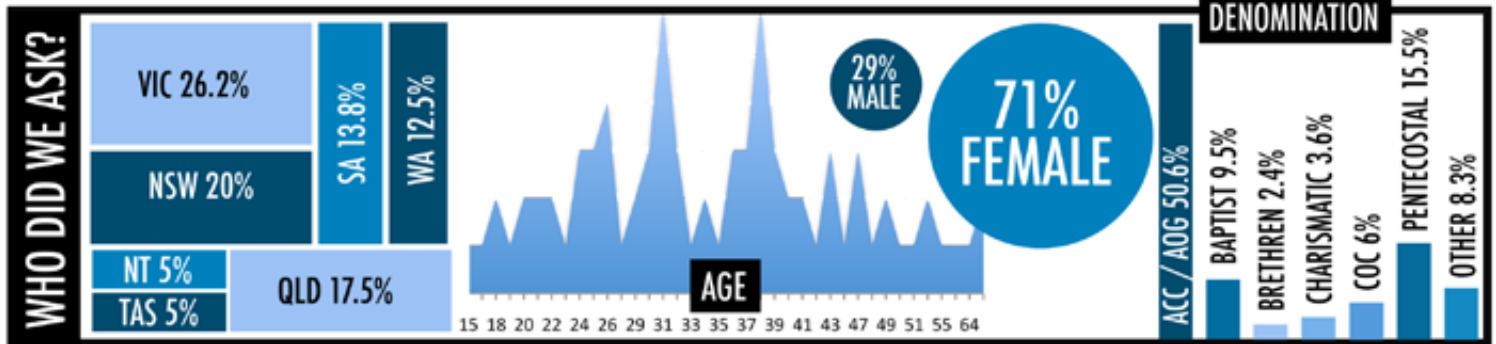
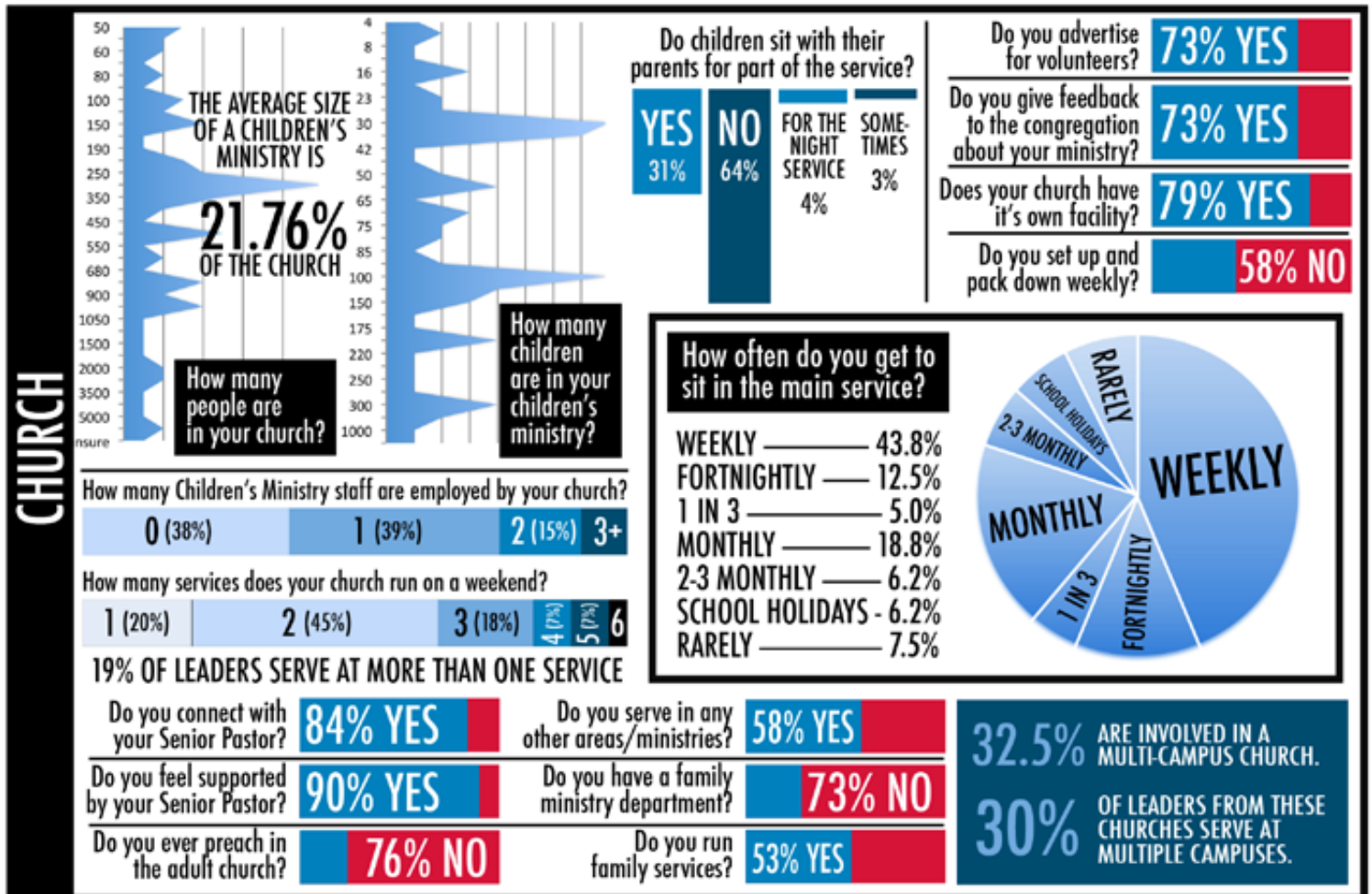


# KIDSTAT AUSTRALIA 2011 RESULTS

ANNUAL CHILDREN'S MINISTRY SURVEY - CONDUCTED BY KIDSHAPER 2011



## ABOUT YOUR CHURCH



# ABOUT YOUR CHILDREN'S MINISTRY

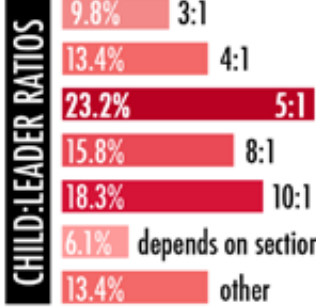
## TEAM



Do you invite parents to join your team? **83% YES**

Do any of your team do CRE in schools? **58% NO**

Do you have team discipleship meetings? **63% YES**



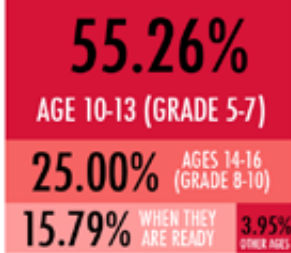
How many leaders leave your team each year on average?



How many leaders join your team each year on average?



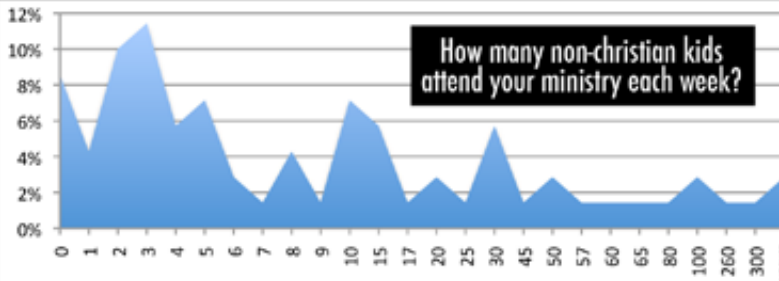
What age should we allow children to become leaders?



What is the main reason leaders leave your team?

1. CHANGING DEPARTMENT
2. DON'T ENJOY IT ANYMORE
3. END OF THE YEAR
4. GOD TOLD ME
5. BURNT OUT
6. MOVING AWAY
7. OTHER COMMITMENTS
8. OTHER REASONS

## OUTREACH



Do you have outreach events in your community? **71% YES**

Are you involved in overseas missions for kids? **54% YES**

Do you have a specific kids outreach team? **71% NO**

Do you join with children's ministries from other churches for events? **58% NO**

## POLICIES

Do you have a child protection policy that you implement? **92% YES**

Do you have procedures for food allergies? **81% YES**

Do you cater for special needs kids? **58% YES**

Are your team trained in protection awareness and reporting abuse?

**80% YES**

**15% NO** 5% - IN PROGRESS

Do you have sign in and out procedures?

10% — NO  
4% — YES, ONLY FOR EARLY CHILDHOOD

**86% YES**

What percentage of children in your ministry are in split custody situations?



What do you think is the most important safety procedure in kids ministry?



## MISCELLANEOUS

Do you pastorally care for the children? **58% YES**

Do you use a curriculum? **76% YES**

Do you write your own curriculum? **74% YES**

Do you have a separate program for early childhood? **95% YES**

Does your program run during the school holidays? **63% YES**

**31% NO**  
6% YES EXCEPT DURING CHRISTMAS

What are some ways that you pastorally care outside your Sunday service?



WHAT CURRICULUM DO YOU USE?

HILLSONG BIG 22% / PLANETSHAKERS 4 22%  
ORANGE 5% / LIFECHURCH.TV 4% / SCRIPTURE UNION 4%  
KIDMO / ELEVATE / HIGH VOLTAGE / OASIS / MAX 7  
HEARTSHAPER / DANIELLE'S PLACE / DAVID GOODWIN  
BILL WILSON / DAVID C COOKE / DISCIPLETOWN / TNT



# ABOUT YOU

YOU

How do you stay fresh and vibrant?

1. TIME WITH GOD
  2. PRAYER // 3. CONFERENCES
  4. PERSONAL TIME & REST
  5. BIBLE STUDY & READING
  6. FELLOWSHIP // 7. NEW EXPERIENCES
  8. PRAISE AND WORSHIP
  9. SUPPORT FROM OTHERS
  10. HEALTH & EXERCISE / SLEEP
- CHURCH // GOOD LEADERSHIP // COFFEE  
MOVIES // OUTDOORS // GENEROSITY  
PODCASTS // SERMONS // RECREATION  
BLOGS // JOURNALLING // VIDEO GAMES  
BEROCCA // HOBBIES // BALANCED LIFE  
TIME WITH FAMILY // MUSIC // FASTING  
INVOLVEMENT IN MINISTRY // NATURE

How do you maintain balance in your life?

- STRUCTURE, SCHEDULES  
TIME WITH FAMILY  
TIME WITH FRIENDS  
TIME TO RELAX
- ACCOUNTABILITY  
FAMILY & FRIENDS  
SPOUSE
- SPECIFIC DAYS OFF FROM WORK HOURS  
SAYING NO
- BE SPIRIT LED, GRACE, HOPE, LOVE  
PRAYER
- PUTTING GOD FIRST  
FOCUS

**JOHN 3:16** 15%

**JEREMIAH 29:11** 9%

**JOHN 10:10** 6%

**FAVOURITE BIBLE VERSE**



When do you come up with your best new ideas?

29% QUIET TIME EARLY MORNING ON THE TOILET

14% RANDOMLY READING BOOKS AT NIGHT

13% WEEKENDS CONVERSATIONS CONFERENCES

11% IN THE SHOWER DRIVING TEAM MEETINGS AT THE OFFICE

8% PRAYER BRAINSTORMING

5% WORSHIPPING WALKING

**TOP 5 FAVOURITE CHILDREN'S MINISTRY SPEAKERS**

- ROB BRADBURY
- ANDREW SHEPHERD
- STEVE ADAMS
- DAVE WAKERLEY
- JIM WIDEMAN

64.2% GREW UP IN A CHRISTIAN FAMILY



FAITH

What time of day do you usually do devotions? **AM 53%** **PM 27%** BOTH 9% N/A 11%

Are you praying for the children in your care? **96% YES**

Do you do devotions? **89% YES**

Have you been baptised with the Holy Spirit? **96% YES**

Have you studied children's ministry at bible college? **77% NO**

How many hours do you pray per week?

How long do you spend doing devotions each day?

5 MINS	10 MINS	15 MINS	20 MINS	25 MINS	30 MINS	45 MINS	1 HOUR	N/A
3%	9%	13%	13%	4%	24%	12%	11%	12%

What qualifications do you have?

- MINISTRY — 30%
- EDUCATION — 16%
- HIGH SCHOOL — 9%
- SOCIAL SERVICES — 7%
- KIDS MINISTRY — 1%
- OTHER — 20%
- NONE — 17%

How many years have you been saved?

How would you rate your relationship with Jesus? (10 = brilliant)

4 (3%)	5 (4%)	6 (8%)	7 (26%)	8 (33%)	9 (21%)	10
--------	--------	--------	---------	---------	---------	----

LEADERSHIP

How would you describe your leadership style?

1% PARTICIPATIVE & DEMOCRATIC

4% 5% 4%

3% 0% 16% DELEGATIVE & FREE REIGN

AUTHORITARIAN & AUTHOCRATIC

61% WORK OUTSIDE MINISTRY

22% STUDY OUTSIDE MINISTRY

How many hours per week do you contribute to your ministry?

Do you have mentors in your life who keep you accountable? **85% YES**

Do you subscribe to a children's ministry magazine? **86% NO**

What do you think is the most important key to effectively leading children?

24% PASSION AND LOVE FOR GOD  
RELATIONSHIP WITH JESUS, TRUSTING THE HOLY SPIRIT

13% BUILDING RELATIONSHIPS  
CONNECT WITH THE KIDS

11% INTEGRITY  
LEAD BY EXAMPLE  
BE AUTHENTIC

10% BE RELATIVE AND ENTHUSIASTIC

10% HAVE A HEART FOR THE CHILDREN AND FAMILIES  
LOVE

9% INVOLVE THEM  
UNDERSTAND THEIR POTENTIAL  
ENCOURAGE THEM

6% SHOW IS LOVE, HIS WORD  
TEACH THEM ABOUT GOD

5% LISTEN TO THEM, UNDERSTAND THEM  
FOCUS ON THE KIDS

4% HAVE A GREAT TEAM

10% OTHER

CONFIDENTIAL

Would you describe your home life as happy? **90% YES**

Do you struggle with secret issues? **73% NO**

Do you watch pornography? **97% NO**

Did you come from a broken home as a child? **72% NO**

Do you find yourself living two lives? **88% NO**

Have you ever been a victim of sexual abuse? **85% NO**

If so, have you been helped with this? **83% YES**